

Orland

On I-5 @ SR32 to Chico

1.5 hrs north of Sacramento

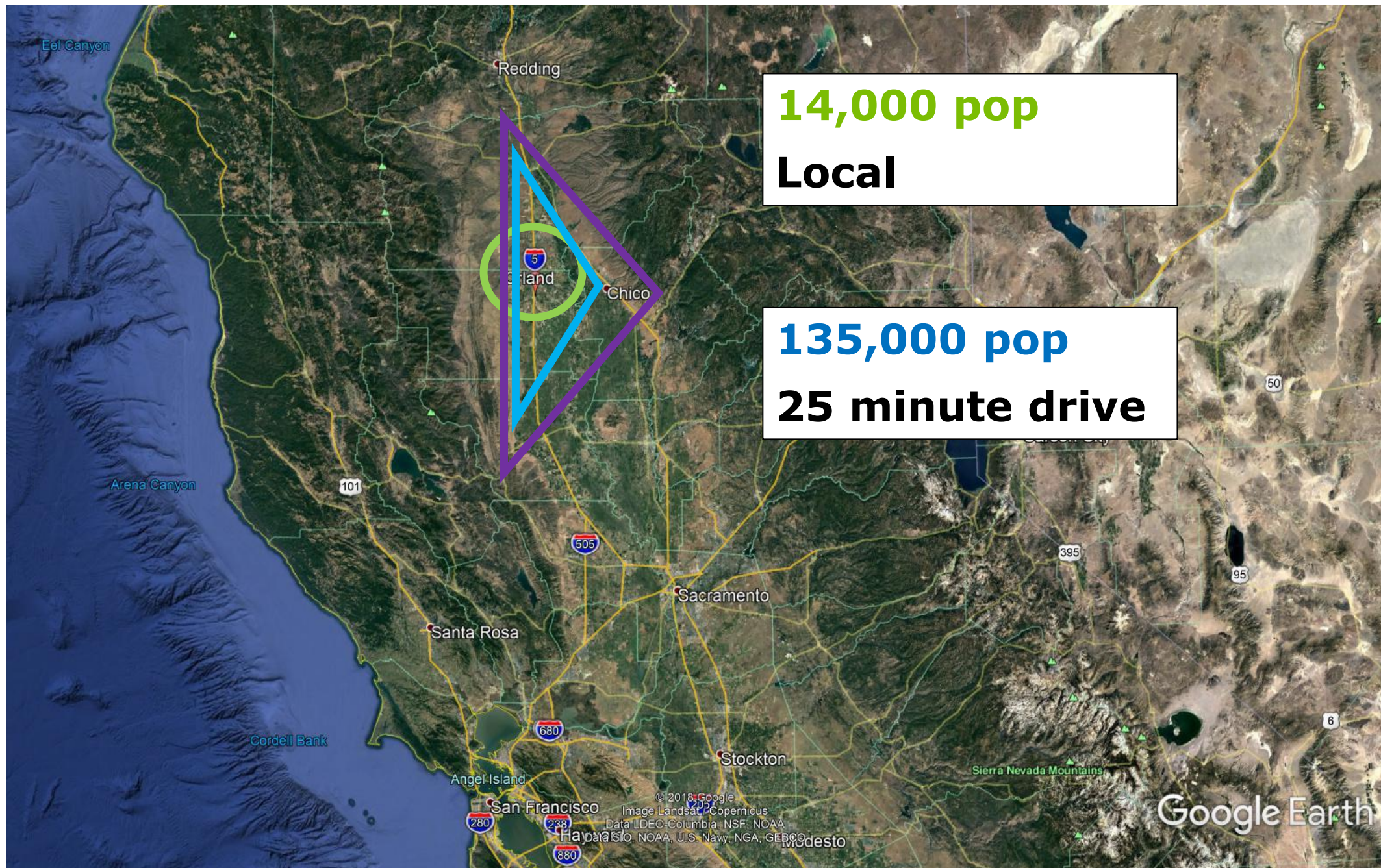
2.5 hrs from SF Bay Area

½way between LA & Portland



Local

25 minute drive



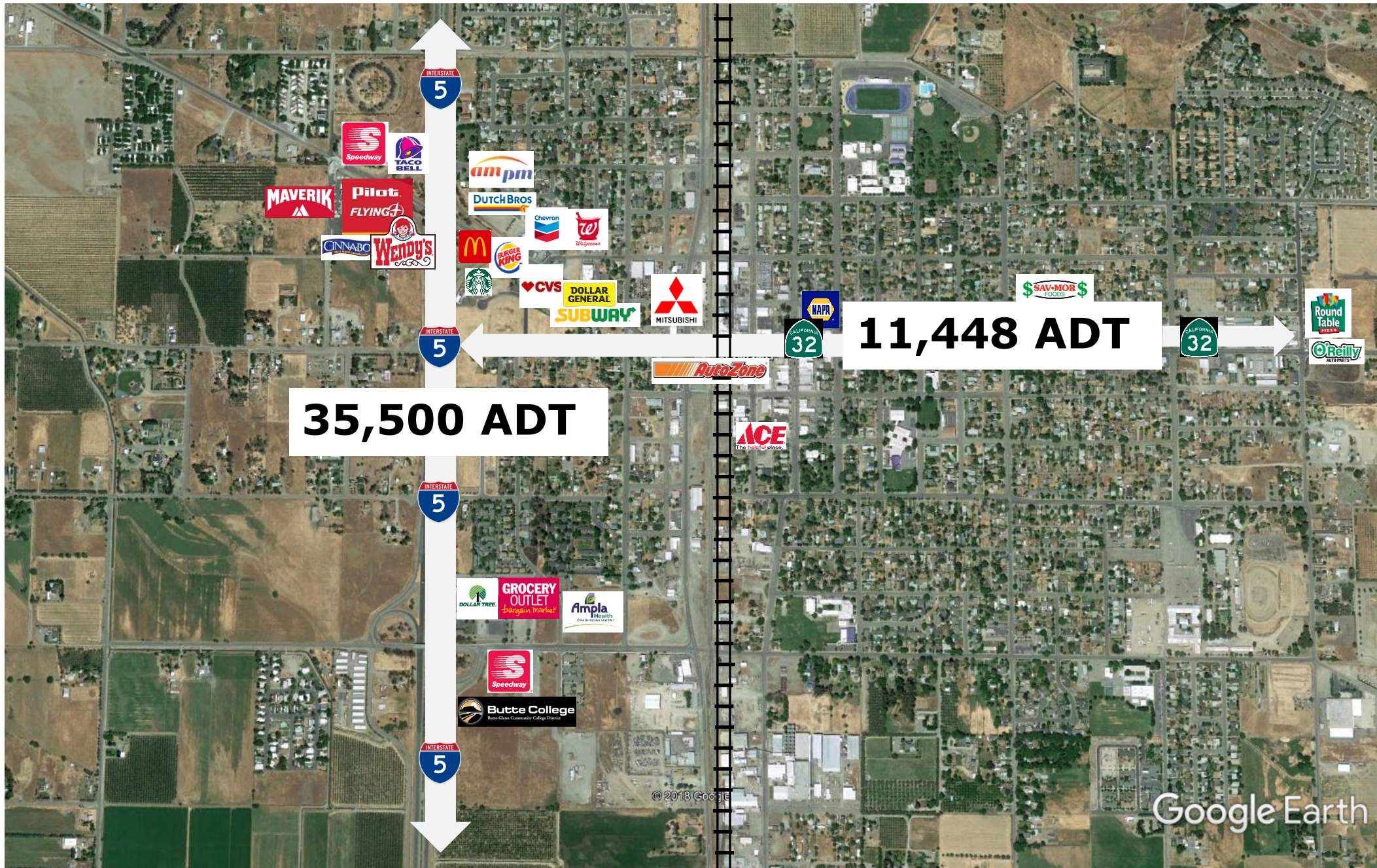


Orland has:

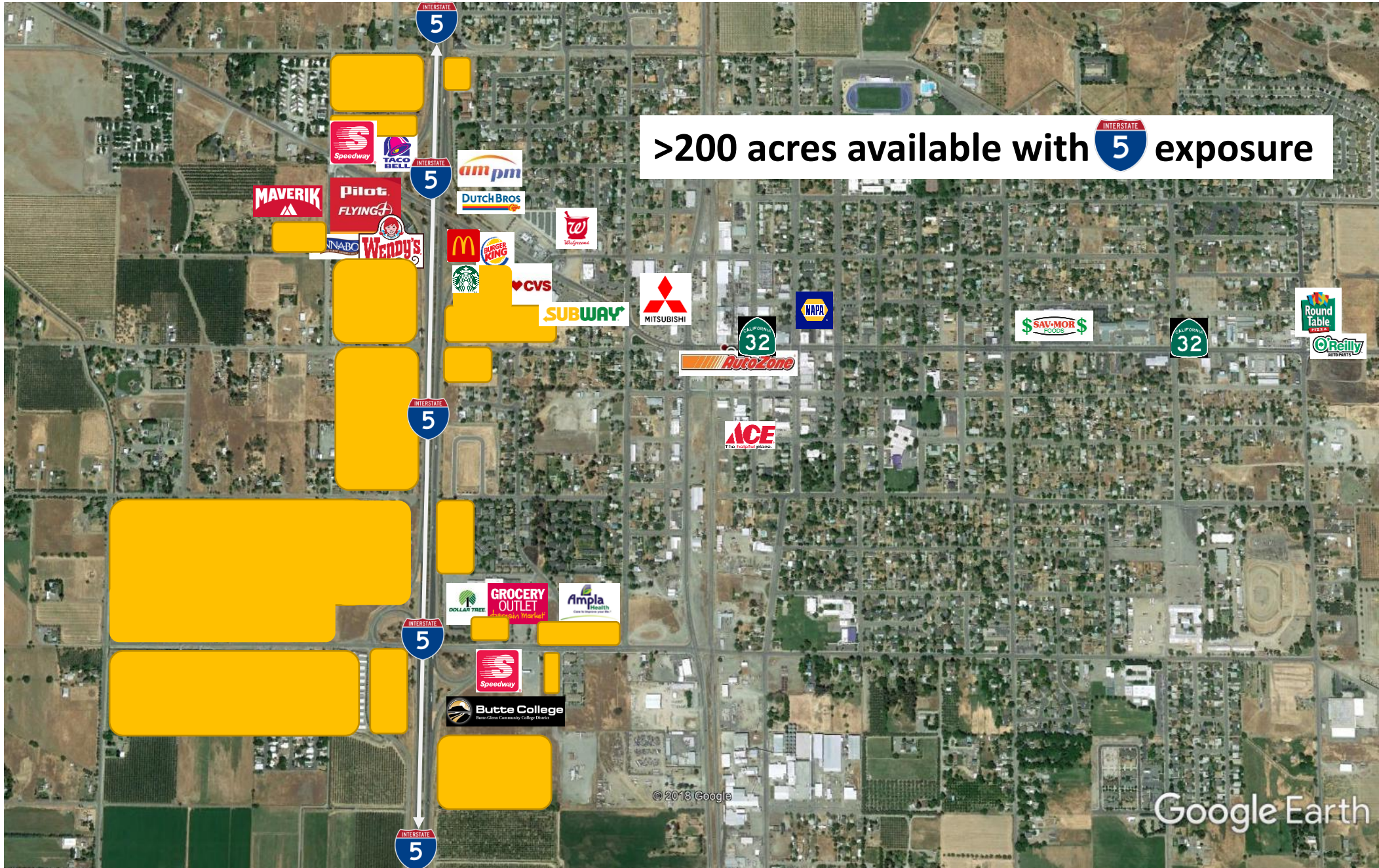
→ City Utilities

→ Pro-business City Council

→ Freeway access & visibility



>200 acres available with  exposure



Exit 619



140 Frances Lane
Street & City Utilities in
3 parcels 1 owner
2.75 ac total

134 Frances Lane
Street & utilities in
2 parcels 1 owner
2.69 ac ea

Exit 619

Excellent hotel sites
In City w/Utilities
Zoned Commercial
1.6 - 10 acres

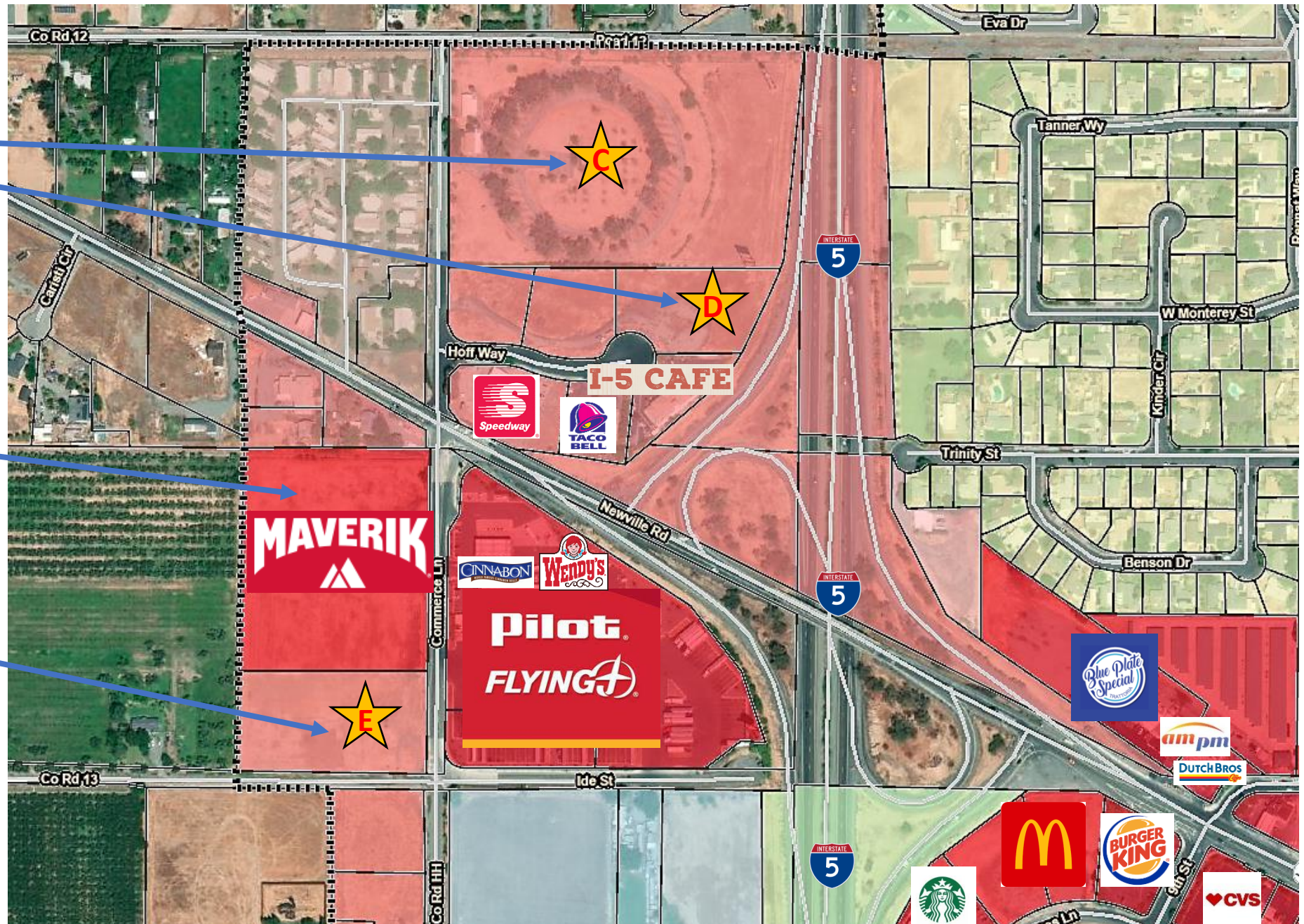
Under Construction
Estimated Opening:
August 2023

Entitled hotel/restaurant
(2016 La Quinta site)
2.57 acres

I-5 CAFE

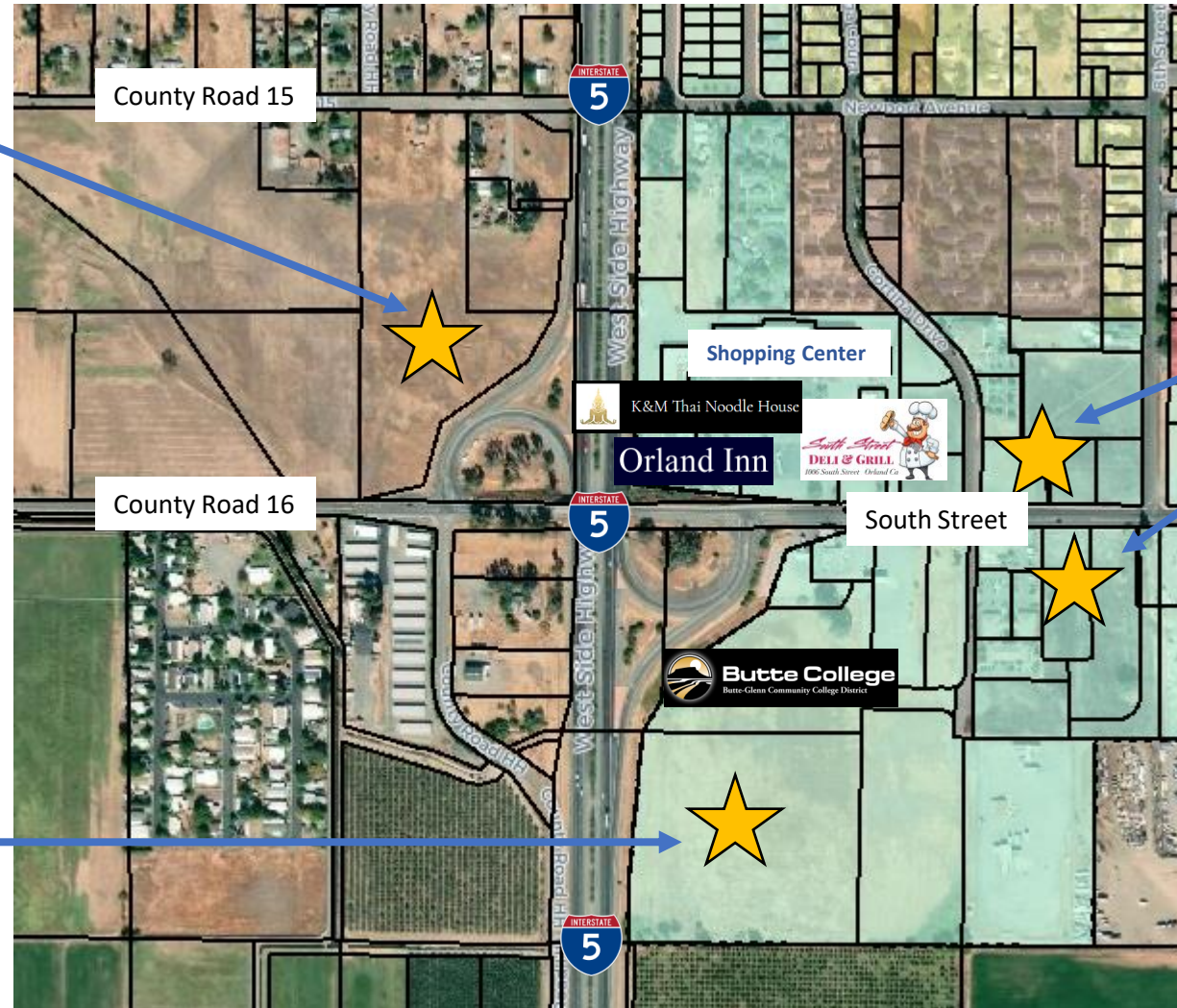


Local full-service
restaurants



Exit 618

9.91 acres in City SOI
GenPlan: Commercial
City sewer available
City water 1 block away



.5 to 3-acre parcels
In City w/Utilities
Zoned PD/Commercial
All utilities ready

11+ acres in City
Zoned PD / Commercial
City water and sewer
available

Proposed annex & project



17 months later!

