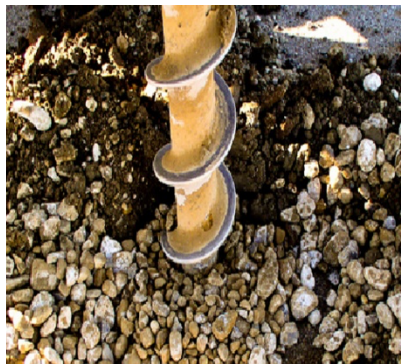


# ACE QUALITY CONTROL

## Statement of Qualifications



Roseville | Redding | San Leandro  
Geotechnical Investigations | Special Inspections | Quality Control Management | Materials Testing



March 10, 2022

City of Orland

**Attn: Mr. John Fleming**

815 4th Street

Orland, California 95963

Phone: (530) 865-1606

Email: [OrlandBuilding@cityoforland.com](mailto:OrlandBuilding@cityoforland.com)

**Subject: City of Orland- Approved Special Inspection Agencies List**

Dear Mr. Fleming,

Please find attached our firm's Statement of Qualifications outlining information about our company, ACE Quality Control (ACE).

Pursuant to ASTM E 329 and D 3740, the undersigned, Curtis E. ("Ed") Hendrick, P.E., G.E., is responsible for special inspection and testing activities and geotechnical engineering services that the firm provides. Mr. Hendrick's resume is attached. Mr. Hendrick supervises all special inspectors and verifies their certifications, ensuring that special inspectors will perform in accordance with latest CBC Chapter 17 and that the issued certifications are according to current guidelines (copies of certifications are attached). Also attached is a summary matrix showing the inspector's and their respective certifications.

If any additional information is needed, then please contact our office. Please add the special inspections that we provide to your "Pre-Approved Firms" list.

Thank you,

**ACE Quality Control**

Ed Hendrick, P.E., R.G.E., R.G., C.E.G.  
Principal Geotechnical Engineer

## Table of Contents

Tab A	ACE Organizational Chart & Company Background
Tab B	Resumes of Professional Staff
Tab C	Certifications/Licenses of Professional Staff
Tab D	Laboratory Certifications

ACE Organizational Chart & Company Background

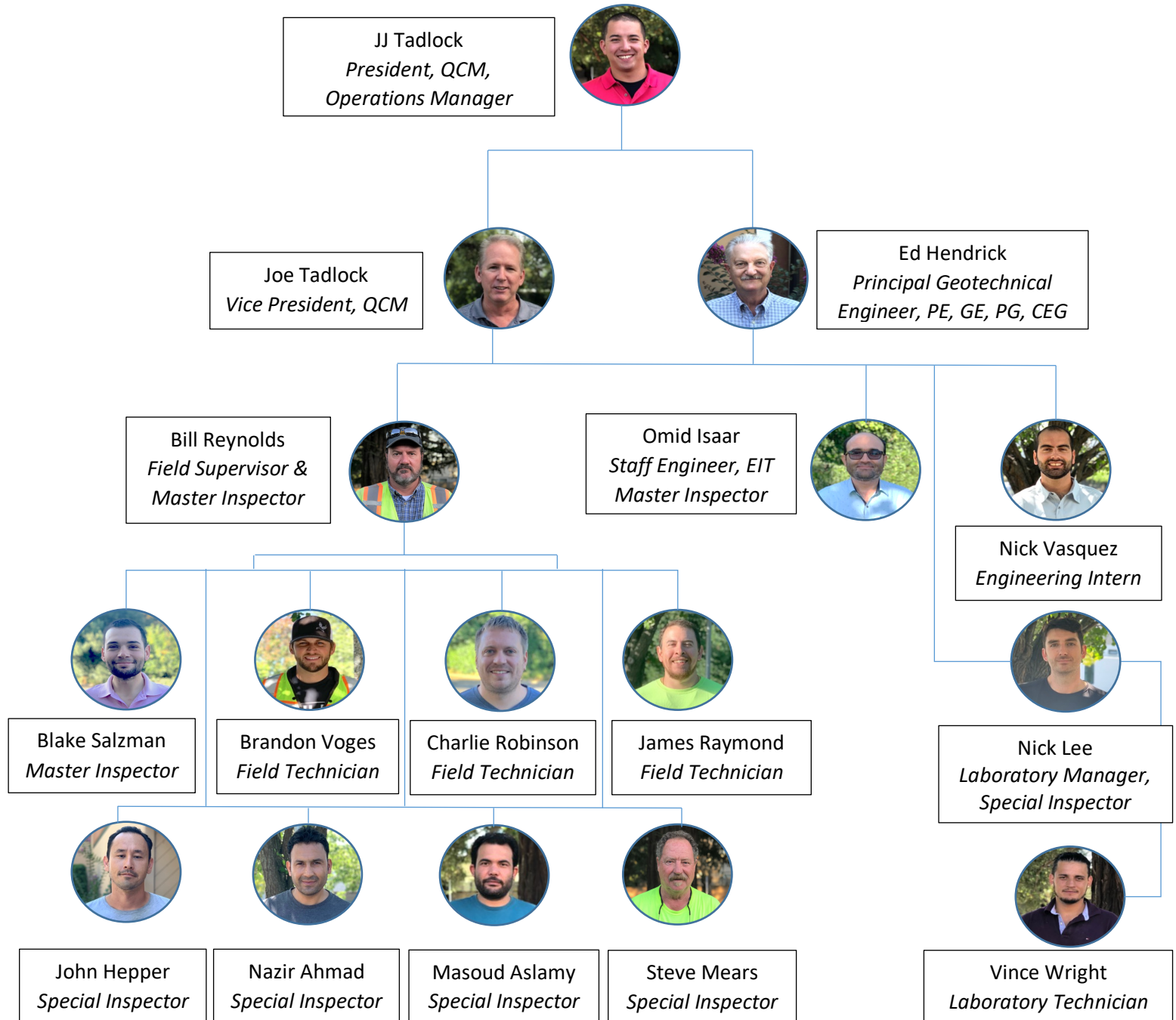
**Tab A**

A





## Project Team Organization Chart





## COMPANY OVERVIEW

**ACS Material Testing (ACS)** and **ACE Quality Control (ACE)** have joined under **Allerion Consulting Group, Inc.** and is a Northern California Geotechnical, Environmental, Special Inspection and Materials Testing group. ACS Materials Testing was started in 2006 as a sole proprietor and quickly expanded by delivery on our promises. Our team of talented professionals possess the enthusiasm and skills that reflect our drive to deliver industry leader services.

**ACE** offers experienced staff for geological, geotechnical, quality control management, special inspections and materials testing services throughout Northern California. The team brings a broad depth of experience and capabilities to every client we serve. Our extensive professional staff are augmented with additional support staff to meet peak requirements.

**ACS** has built a strong reputation in the transportation market and Northern California area. Our labs are Caltrans approved and managed to CCRL & AMRL Standards. In addition, we participate in Reference Material Sample testing to ensure staff and testing protocol maintain the highest quality possible. These quality standards include both field and laboratory personnel.

### Engineering Services:

- Environmental
- Geological
- Geotechnical
- Slope Stability
- Pavement Design
- Construction Defects
- Metallurgical

### QC Management:

- QC Managers (USACE)
- QC Specialists
- Quality Control Plans
- Submittal Review

### Inspection & Testers:

- Soils Technicians
- Asphalt Technicians
- ICC Concrete Inspector
- ICC Masonry Inspector
- ICC Structural Inspector
- ICC Fireproofing
- ICC High Strength Bolting

### Laboratory Services:

- Analytical Soils Testing
- Geotechnical Soils
- Asphalt Testing
- Soils Testing
- Concrete Testing
- Masonry Testing
- Steel Testing

### Specialty Services:

- Seismic Evaluation
- Floor Flatness Testing
- Waterproofing
- Material Qualification
- Code Compliance
- ICC Mechanical
- ICC Electrical
- ICC Plumbing
- Rebar Locating
- Floor Levelness

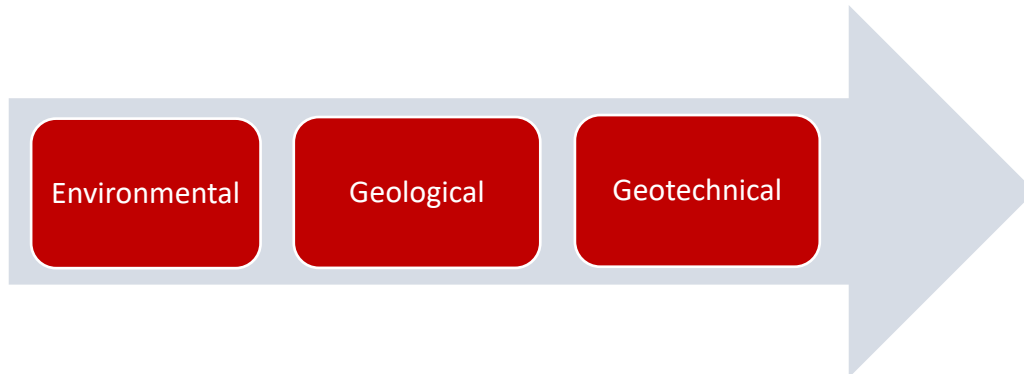




## ENGINEERING SERVICES

**ACE Quality Control** provides engineering services including Geotechnical, Geological, Environmental, and forensic services. Our team of talented professionals possess the enthusiasm and skills that reflect our drive to be industry leaders. With an extensive technical team in each office, we maintain a strong group of support staff to meet peak project requirements. The engineering departments includes the following disciplines to support each phase of the project life cycle:

### Engineering Design & Pre-Construction Support



### Environmental Services

- Phase I & II Environmental Site Assessments
- Soil and Groundwater Assessment
- Soil and Groundwater Remediation
- Industrial Hygiene
- Petroleum/Hazardous Materials Storage Tank Management
- Brownfields Assessments
- HUD Environmental Assessments
- USGBC LEED® Green Building Consulting



## ENGINEERING SERVICES

### Geological Services

- Surface fault rupture hazard analysis and recommendations
- Landslide mapping
- Rockfall hazards mapping and modeling
- Geological mapping for soil embankments and rock cut slope stability
- Seismic refraction studies to determine depth to bedrock, rip ability, subsurface bedrock topography, and depth to water
- Groundwater modeling and dewatering
- Litigation support and expert witness testimony
- Pre-purchase geologic hazards evaluation
- Sand and gravel reserve analysis

### Geotechnical Engineering Services

- **Subsurface explorations, assessments, and design capabilities** using an extensive subsurface database for local geologies.
- **Geophysical surveys**, including seismic refraction, electrical resistivity, ground penetration radar, as well as associated geotechnical engineering and design services.
- **Geotechnical construction services** to support new construction projects, i.e. value engineering, review, and sample testing, laboratory testing for soil modification, evaluation of foundation bearing conditions, and forensic investigations.

**ACE** has been a proactive leader in bringing together engineering staff who deliver sound engineering solutions that protect the client and minimize construction cost impacts. Our engineering team members are continually challenging design methods to bridge sound engineering with advanced design solutions. The engineering department evaluates a design scenario using advanced software to simulate seismic events, quantitative risk analysis relating to slide potential, and geological impacts on a project.



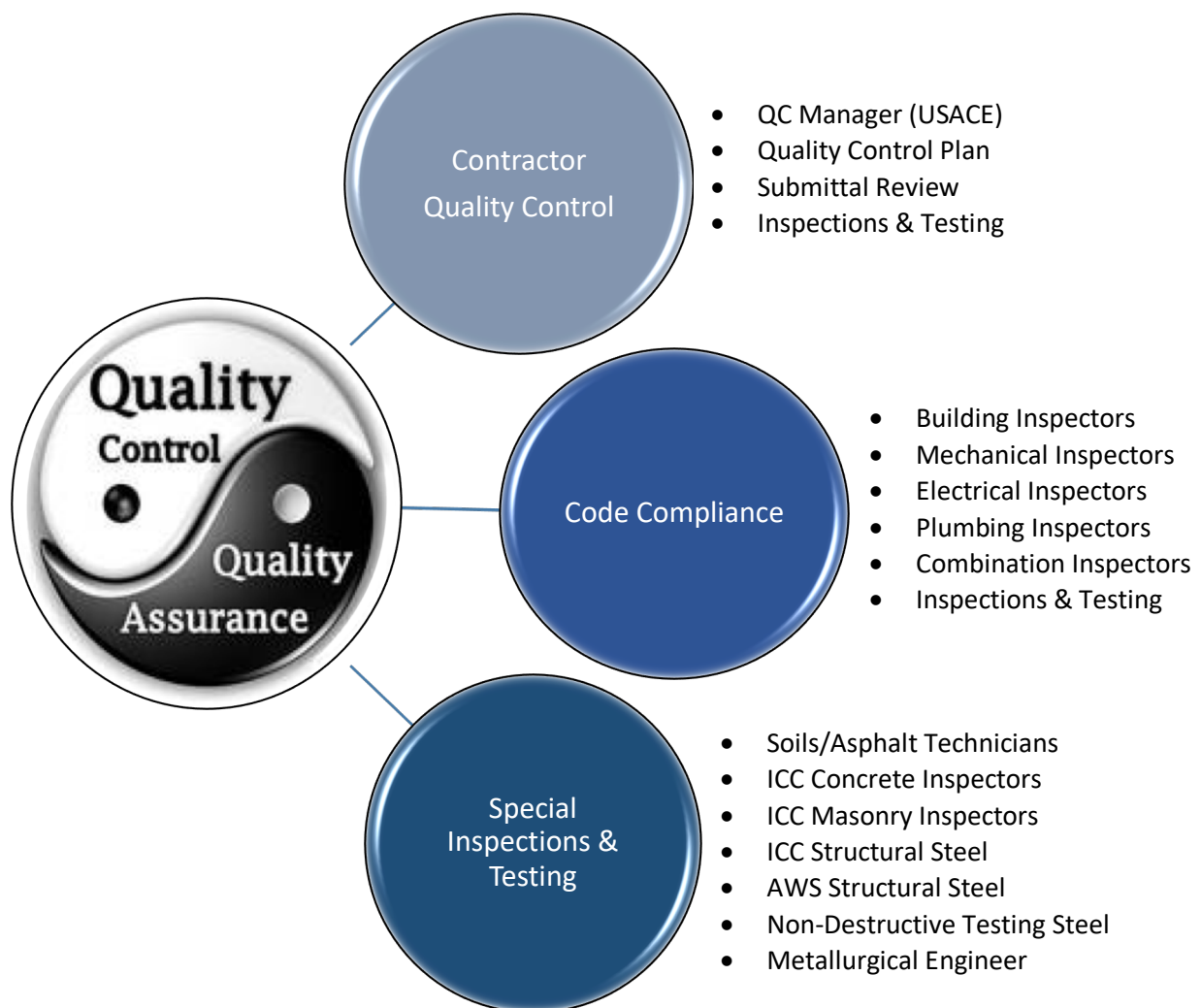




## CONSTRUCTION SERVICES

**ACE** has strong quality control and quality assurance teams to address public agencies, private sector and general contractor construction quality needs. Our staff include design professionals for submittal review, certified Quality Control Managers, structural certified inspectors, code compliance professionals and qualified materials testers. In addition, our laboratories, throughout Northern California, maintain a variety of lab and personnel certifications to support accurate results.

### Construction Quality Control & Quality Assurance Services





## TECHNICAL STAFF

**ACE** has a solid depth of staff to address public agencies, private sector and general contractor construction quality needs. Our staff include design professionals for submittal review, certified Quality Control Managers, structural certified inspectors, code compliance professionals and qualified materials testers. In addition, our laboratories throughout Northern California maintain a variety of lab and certifications to support accurate results.

Key Technical Staff	Role
Curtis "Ed" Hendrick, RCE, GE, CEG	Geotechnical Engineering Manager
Mark Bell, PE	Metallurgist
Alan Krause	Staff Engineer
JJ Tadlock	Operations Manager (Roseville)
Robert Williams	USACE certified QC Manager
Bob Nixa	Operations Manager (Redding)
Blake Salzman	Division Manager – Code Compliance
Alan O'Neil	ICC Master Special Inspector
Mark Reese	Steel NDT Managers

Technical Staff	Number of Personnel
Engineering Staff	6
USACE certified QC Managers	5
ICC Special Inspectors	7
NDT Ultrasonic Testing	2
NDT Magnetic Particle	4
NDT Dye Penetrant	2
ICC Building & MEP	5
Soils Technicians	6
Caltrans Certified	4
Asphalt Technicians	7
Laboratory Personnel	3

ADDITIONAL RESOURCES		
Portable Labs	Grout Bleed Equipment	Shrinkage Testing
Schmidt Testing	Floor Flatness Testing	Site Trailers
Nuclear Gauges	Torque Testing	Pull Testing Rams
Coring Equipment	Bolt Calibration Equipment	Specialty Testing





## TECHNICAL STAFF

### Quality Control/Quality Assurance Field Services

#### Structural Inspection

- Concrete
- Masonry
- Post Tensioning
- Reinforcing Steel
- Structural Steel
- Soils Compaction
- Failure Analysis
- Ultrasonic Testing
- Epoxy Anchors
- Pull-Testing
- Specialty Inspections

#### Code Compliance

- OSHPD/DSA IOR's
- Building Inspections
- Mechanical Inspections
- Electrical Inspections
- Plumbing Inspections
- Building Envelope Inspections

#### Non Structural Inspection

- Fire Proofing
- Waterproofing
- Roofing
- Curtain Wall
- Expansion Anchors
- Nuclear Use Testing
- Asphalt Lay Down
- Coating Thickness
- Floor Flatness
- Concrete/CMU Coring
- Non-Destructive Testing

#### Quality Control Oversight

- USACE Certified Quality Control Managers
- Develop and Administer QC Plans
- Project Close-Out Oversight
- Inspector of Record Services
- Resident Engineer Services
- Metallurgist

**ACE** assigns the best individuals for each project and a good example would be structural steel projects. When a project requires a certified welding inspection and non-destructive testing (i.e. UT, Mag. Particle, Dye Pen.), we attempt to assign one individual certified in both areas. The benefits in this situation include continuity, production efficiencies and built in cost savings for the client. This same approach is taken when a project has concrete, masonry and steel. One inspector can typically cover the work and results in job cost savings for our clients.





## ***MATERIALS TESTING SERVICES***

**ACE** is dedicated to delivering accurate and responsive laboratory test results. These results and Turn-Around-Times can become critical to a project. As a result, our team enjoys the challenge and take our tasks very serious. Our laboratories are overseen by our engineers who manage the Laboratory Managers and provide quality assurance oversight. The Laboratory Managers are responsible for managing lab technicians, maintaining laboratory accreditations, and they work diligently to complete lab testing in a timely manner.



### **Laboratory Services and Materials Testing**

#### **Materials Testing**

- Soils (Structural)
- Soils (Environmental)
- Concrete
- Shotcrete
- Masonry
- Grout
- Mortar
- Reinforcing Steel
- Structural Steel
- Aggregates
- Roofing
- Fireproofing
- Expansion Index
- Resilient Modulus
- Permeability
- Tensile & Elongation

#### **Specialty Testing**

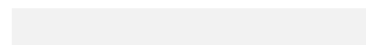
- Soils / Formation Analysis
- Particle Size Distribution
- Soil Rock Classifications
- Compaction Relationships
- Plasticity Characteristics
- R-Value
- Sodium Sulfate
- Triaxial and Direct Shear
- Compressive Strengths
- California Bearing Ratio
- Specific Gravity
- Modulus of Elasticity
- Dry Shrinkage Testing
- NDT Structural Steel
- Concrete Moisture Testing
- Forensic Testing



B

**Tab B**

Resumes of Professional Staff



## RESUME

Curtis "Ed" Hendrick, *Principal Geotechnical Engineer*

### EDUCATION:

Master of Science, Engineering Science, University of California, Berkeley, California, 1975

Bachelor of Science, Geology, University of California, Davis, 1970

### LICENSES/CERTIFICATIONS:

#### Register Civil Engineer

No. C29260, California

#### Geotechnical Engineer

No. GE002021, California

#### Registered Geologist

No. 3557, California

#### Certified Engineering Geologist

No. 1052, California

40-Hour HAZWOPER

ACI Aggregate Testing Technician – Level 1

CPN Nuclear Density Gauge

CPN Radiation Safety Officer

### AFFILIATION:

American Society of Civil Engineers

American Concrete Institute

Association of Engineering Geologists

American Public Works Association

Rotary International

### REPRESENTATIVE EXPERIENCE

Mr. Hendrick has been a geotechnical/geological consultant on thousands of projects in Northern California and Western Nevada, including earth dams and levees; residential, retail/commercial, professional, and industrial buildings; shopping centers; banks; churches; cemeteries; roadways; roadways; bridges; landfills; potable/waste water pipelines; banks; underground utility vaults; schools; running tracks/playing fields; and, etcetera. These projects have typically involved subsurface exploration; laboratory testing; soil stability and bearing capability; potential settlement; lateral earth pressures; expansive soils; slope stability and stabilization; erosion mitigation; site seismicity and fault identification; and groundwater. He has performed Engineer of Record (EOR) services for small to large scale projects. He has extensive experience with special inspection and materials testing during construction of various structures and performed construction troubleshooting.

### GEOTECHNICAL:

Ed supervises, directs, and monitors all geotechnical engineering activities including design and construction projects involving drilled and driven deep foundations. In addition, Mr. Hendrick is responsible for managing laboratory and field staff for the Roseville and Redding Laboratory facilities. Ed oversees review of staff qualifications, certifications and training records. He also reviews both field and laboratory testing reports.

### ENVIRONMENTAL:

Mr. Hendrick has performed consulting services for preliminary assessments of properties for potential contamination (primarily related to real property transfers commonly referred to as Phase I Environmental Site Assessments), initial assessments through site remediation of sites contaminated by leaking underground storage tank systems, solid waste assessment tests (SWAT) for landfills and landfill closure. Ed Hendrick oversees environmental assessments of structures and site conditions including the presence of lead, asbestos and potential environmental concerns. Environmental investigations and assessments have been performed on government and private sector projects throughout Northern California.

### PROVIDED ENGINEERING OVERSIGHT

Folsom Dam Spillway, Phase IV, Folsom, California

Earthen Dams, Jem Ranch Farms, LLC, Capay, Yolo County, California

City of Roseville's Sewage Pump Station No. 1

Roberts Ranch Bridge, Crow Canyon Place

Roberts Creek Road (Proposed), Castro Valley, California

Mather Hospital Expansion & Numerous Add., Rancho Cordova, California

Blue Oaks Town Center, Rocklin, California

Folsom Premium Outlet Stores – Phase III, California

Forensic Study, Folsom Factory Stores

Distressed Buildings 2 & 5, Folsom, California

Embassy Suites, Rancho Cordova, California  
Wentworth Springs Road, El Dorado County, California  
Highway 113 Improvements, Dixon, California  
Civic Plaza Parking Structure and Office Building, Roseville, California  
Numerous Communication Tower Sites – California and Nevada  
Roseville Conference Center – Roseville, California  
Bartlett Avenue, Hayward, California  
Valley View, American Canyon, California

**PREVIOUS COMPANIES:**

- 2014-2015    **CTE Cal, Inc., Sacramento, California**  
**Senior Geotechnical & Environmental Engineer**  
The position entails providing engineering support for environmental, geotechnical and civil related projects. Mr. Hendrick extensive experience in solving geotechnical, environmental and forensic related challenges on both new and existing facilities, structures and civil related projects.
- 2012-2014    **Terracon Consultants, Inc., Sacramento, California**  
**Civil Engineering Manager**  
Responsible for overall technical supervision of professional and technical staff for Modesto, Corona, and San Diego Branch Offices. Supervised, directed, and monitored all engineering activities including civil engineering design, geotechnical & materials engineering.
- 1981-2012    **Earthtec, Inc., Roseville, California**  
**President, Managing Engineer**  
Responsible for overall technical supervision of professional and technical staff in Northern California region. Supervised, directed, and monitored all civil and environmental engineering activities.
- 1979-1981    **Hendrick Engineering & Geology, Roseville, California**  
**Principal, Managing Engineer**  
Responsible for overall technical supervision of professional and technical staff in Northern California region. Supervised, directed, and monitored all civil and environmental engineering activities.
- 1978-1979    **Lowery & Associates, Sacramento, California**  
**Staff Engineer**
- 1975-1978    **Moore & Taber Consultants, Sacramento, California**  
**Staff Engineer/Geologist**

**ADDITIONAL EXPERIENCE**

Waggoner Elementary School Seismic Evaluation, Winters USD, Winters  
Winters Middle School Seismic Evaluation, Winters USD, Winters  
Winters High School, Winters USD, Winters  
Shirley Rominger Intermediate Middle School, Winters USD, Winters  
Winters High School Ag Facility, Winters USD, Winters  
Wolfskill Continuation High School, Winters USD, Winters  
Mule Creek Prison (Numerous Projects), Lone, CA  
Sacramento State Prison (Numerous Projects), Folsom, CA  
Folsom State Prison (Numerous Projects), Folsom, CA  
San Quentin State Prison, San Quentin, CA  
Pelican Bay State Prison, Crescent City, CA  
Verizon Cell Towers (over 100 sites), California  
Fairfield Armory Structural Project, Fairfield, CA  
Elk Grove Auto Collision & Detail Shop, Elk Grove, CA  
Howard Johnson Geo Assessment, Rocklin, CA  
Whisper Creek (Morgan Ranch) Subdivision, Roseville, CA



# RESUME

**William Reynolds**, Soils/ Asphalt Construction Inspector

## EDUCATION:

Wilrick Institute of Technology,  
North Highlands, California

Construction Inspection Training  
Program

## CERTIFICATIONS:

### ACI CERTIFICATIONS

ACI Concrete Field Testing  
Technician, Grade 1

### ICC CERTIFICATIONS

Reinforced Concrete  
Structural Masonry  
Structural Steel/Welding  
Structural Steel and Bolting

### OTHER CERTIFICATIONS

Troxler Nuclear Testing  
AWS Certified Welder

## AFFILIATIONS:

International Code Council  
American Concrete Institute  
American Construction Inspectors  
Association  
American Welding Society  
Precast / Prestressed Concrete  
Institute

## REPRESENTATIVE EXPERIENCE

Project Lead Inspector Mr. William Reynolds has over 22 years of experience working on multi-million and billion-dollar engineering and construction projects, performing quality control, quality assurance testing, and inspection. He specializes in code enforcement, blueprint reading, jurisdictional procedures, and contract specifications. His responsibilities include maintaining accurate daily reporting, employee scheduling, supervising, and job progress scheduling. Mr. Reynolds is familiar with both the International Building Code and the California Building Code. Projects have included commercial, retail, high rise, municipal, WWTP, WTP, State and Federal oversight projects. Bill Reynolds serves as lead inspector on ACE Quality Control's critical projects. His extensive knowledge and experience to ensure continuity on the jobsite and strong coordination with the project team

## PROJECT EXPERIENCE

Adams Creek Bridge, Trinity County, CA  
Atla Bridge, Alta, CA  
Beale AFB Dock 5 Building 1076 Renovation, Beale AFB, CA  
Blackwelder Dam, Beale AFB, CA  
Coffee Creek Bridge, Trinity County, CA  
Hayfork Creek Bridge, Trinity County, CA  
Laughlin Bridges, Beale AFB, CA  
Little Creek Bridge, Trinity County, CA  
Miller Lake Dam, Beale AFB, CA  
Mumbo Creek Bridge, Trinity County, CA  
Railroad Bridge Replacement Environmental, Beale AFB, CA  
Spring Valley Road Bridge, Yuba City, California  
Wheatland Gate Bridge 221, Beale AFB, CA  
Wheatland Gate Bridge 222, Beale AFB, CA

## ADDITIONAL PROJECTS:

CDCR Health Care Facility Improvement Program, Lone, CA  
CDCR MCSP- HCFIP- Path of Travel, Lone, California  
CDCR MCSP- Waste Water Treatment Plant, Lone, California  
CDCR Mule Creek SP- Electrical System Upgrade, Lone, CA  
CDCR Mule Creek SP- Hot Water Loop Repl. Ph III, Lone, CA  
Common Mission Control Center, Beale AFB, CA  
Repair 300 Ramp- Spot 300, 301, Travis AFB, California  
VA Hospital Seismic Upgrade, Travis AFB  
VA Mather Construct Mental Health Services Bldg., Mather, CA  
VA Mather MATOC Site Prep for MRI Building - Mather, CA  
VA Mather Rehabilitation Building, Mather, CA

VA Mather- West Ramp Resurfacing, Mather, California  
VA Palo Alto 520 Patient Safety, VA Palo Alto, CA

## **WORK EXPERIENCE**

### **ACE Quality Control**

**04/2016 - Current**

- Quality Control Technician/Special Inspector

Performed quality control materials testing of inspections on various federal, state, and military projects. Duties included daily reporting, following plans, IBC, and CBC.

### **CTE Cal, Inc.**

**06/2012 – 03/2016**

#### **Sacramento, California**

- Quality Control Technician/Special Inspector

Performed quality control inspections on various federal, state, and military projects. Duties included daily reporting, following plans, IBC, and CBC.

### **Matriscope Engineering Laboratories, Inc.**

**03/2006 – 05/2012**

#### **Sacramento, California**

- Quality Control Technician/Special Inspector

Performed inspections of structural steel, welding, bolting, reinforced concrete, shotcrete, and structural masonry, small and large bore. Observed tubex pile drilling, as well as high strength grouting, epoxy dowel installation, pull testing, among other various duties.

### **Consolidated Engineering Laboratory**

**01/1996 – 10/2005**

#### **Pleasanton, California**

- Quality Control Technician/Special Inspector

Inspection of structural steel, welding, bolting, reinforced concrete, shotcrete, and structural masonry. Observed micro pile drilling, as well as grouting, dowel installation, pull testing, and sheer nailing.

**EDUCATION:**

Wilrick Institute of Technology,  
Worldspec.org

Sierra College- General Education,  
EMT and Firefighting Courses

**CERTIFICATIONS:****ACI CERTIFICATIONS**

ACI Concrete Field Testing  
Technician, Grade 1

**ICC CERTIFICATIONS**

Reinforced Concrete  
Structural Masonry  
Structural Steel and Bolting

**OTHER CERTIFICATIONS**

AWS Certified Welding Inspector  
UT Level II  
MT Level II

**AFFILIATIONS:**

American Concrete Institute  
International Code Council  
American Welding Society

**REPRESENTATIVE EXPERIENCE**

John Hepper has almost 10 years of experience working on multi-million and billion-dollar engineering and construction projects, performing welding, ultrasonic testing, bolting and reinforcing concrete inspection. He specializes in welding inspection and ultrasonic testing and is a valuable asset to the team. His responsibilities include maintaining accurate daily reporting, maintaining open communication with the contractor and subs when on site, reviewing specs and plans, and attend pre-con and trade specific meetings when needed. Mr. Hepper is familiar with both the International Building Code and the California Building Code. Projects have included commercial, retail, high rise, WWTP, hospital, transit, and residential projects.

**PROJECT EXPERIENCE**

Main Street Plaza Buildings A & B, Roseville, CA  
Cinemark Theatre Roseville Galleria, Roseville, CA  
Studio Movie Grill, Citrus Heights, CA  
Various Projects, Beale AFB, CA  
Tapscott Building, Oakland, CA  
Santa Clara Family Justice Center, San Jose, CA  
Hitachi HGST, San Jose, CA  
Transbay Transit Center, San Francisco, CA  
Oracle, San Jose, CA  
237 On Moffett Offices (Formerly 215 Moffett) Sunnyvale, CA  
El Camino Hospital, Mountain View, CA  
Stanford Redwood City Campus, Redwood City, CA  
Google Bay View, NASA Ames Research Center, CA  
Lemoore Multi-Use Sports Complex, Lemoore, CA  
National Guard Sector Command, Yerba Buena Island  
Caldecott Tunnel Upgrades, Oakland, CA  
BART Warm Springs, Fremont, CA  
Laguna Honda Hospital, San Francisco, CA

**WORK EXPERIENCE**

<b>Smith Emery, San Francisco, California</b>	<b>2014- 2019</b>
<i>Special Inspector</i>	
Performed welding, UT, bolting, rebar and concrete inspections on DSA, OSHPD, and commercial projects. Duties included performing inspections, proper daily reporting, reviewing plans and specs to ensure compliance, attended job site meetings as necessary, and trained other employees in UT, MT and visual welding inspection.	

**RMA Group, San Jose, California****2013- 2014***Special Inspector*

Acted as resident inspector on a 170,000-sf warehouse, performing continuous welding inspection, reinforced concrete, concrete and grout sampling and epoxy anchor placement inspections. Wrote daily reports on inspections and submitted them in a timely manner.

**BAGG Engineers, San Jose, California****2012- 2013***Special Inspector*

Performed inspection of structural steel, welding, bolting, reinforced concrete, shotcrete, and structural masonry on schools, residences, commercial buildings and amusement parks. Wrote daily reports on inspections and submitted them in a timely manner.

**Construction Testing Services, Oakland, California***Special Inspector*

Performed welding inspection, including ultrasonic testing, structural steel bolting, and reinforced concrete inspection. Was resident inspector on multiple large commercial projects as well as a short-term inspector on many different projects. Provided daily field reports and informed contractor if any corrections to work needed to be made.



**EDUCATION:**

BS, Civil Engineering, California State University of Sacramento

**CERTIFICATIONS:**

American Concrete Institute (ACI): Concrete Field Testing Technician- Level I, Concrete Strength Testing

International Code Council (ICC) Sprayed-Applied Fireproofing Special Inspector

International Code Council (ICC) Structural Masonry Special Inspector

International Code Council (ICC) Reinforced Concrete Special Inspector

International Code Council (ICC) Post Tension Special Inspector

International Code Council (ICC) Soils Special Inspector

California Department of Transportation (CalTrans) Test Methods – 105, 125, 201-229

Allen Face Floor Flatness Technician

Radiation Safety for use of Nuclear Gauge and Radiation Safety Officer– CPN

OSHA Construction Safety and Health 30-Hour Training

**AFFILIATION:**

American Society of Civil Engineers

American Concrete Institute

International Code Council

**REPRESENTATIVE EXPERIENCE**

As ACE's Roseville Laboratory Manager, Nicholas Lee applies more than 9 years of experience in a wide range of materials testing including asphalt, soils, aggregates, concrete, reinforcing steel and structural steel, fireproofing and fiber-reinforced polymers, as well as special investigative testing and floor flatness surveys. He is certified in Caltrans Test Methods, and experienced in a multitude of ASTM and AASHTO test procedures. Nick is dedicated to running a quality laboratory and the training and supervision of the staff of laboratory technicians.

At ACE, Nick also provides technical oversight of laboratory departments subject to review and approval of numerous agencies including the California Department of General Services, California Division of the State Architect (DSA), State of California Office of Statewide Health Planning and Development (OSHPD), AASHTO, Army Corp of Engineers, Caltrans, local City and County Building Officials, in addition to numerous private organizations for laboratory and safety audit qualifications.

**PROJECT EXPERIENCE**

- USACE Feather River FHR 1.0L Bank Protection, Yuba County
- USACE PL 84-99 Feather River Repairs, Sacramento County
- USACE San Joaquin Levee Repairs, San Joaquin County
- Bridgeport Historic Covered Bridge, Nevada County, CA
- USBR - Nimbus Hatchery's Fish Ladder, Folsom, CA
- Nimbus Fish Hatchery Raceway BFV Replacement, Folsom, CA
- Caltrans - 5 CMU Soundwall 03-0H10U4, Sacramento, CA
- Sacramento County CMU Screen Wall Repair, Sacramento, CA
- FHWA Wolfsen Road, Merced County, CA
- EchoWater RAS Pumping Station Project, Elk Grove, CA
- EchoWater Channel Aeration Blower Project, Elk Grove, CA
- Beale 60KV Switchyard, Beale AFB
- Fort Mason Building 201 Boiler Project- San Francisco, CA
- Mayer Memorial Hospital Expansion- Fall River Mills, CA
- NASA Ames Research Building N245, Moffet Field, CA
- Yosemite El Portal Sanitary Sewer Phase II, Yosemite, CA
- VA Mather New Dermatology Bldg., Rancho Cordova, CA
- Oakland International Airport Runway 12-30 Rehabilitation South Field, 90,000 tons of AC, QA testing per FAA
- Support Rental Car Center, Taxiway P Pavement Rehab Oakland Army Base-multiple agency projects
- Transbay Transit Center Bus Ramps (TG 18.1), San Francisco (Caltrans)
- City of Belmont – multiple agency projects
- City of Berkeley Pavement Rehabilitation– multiple agency projects
- Contra Costa County – multiple agency projects
- El Camino Hospital Parking Garage Expansion
- Pinole Valley High School Campus Replacement
- UC Berkeley – multiple university projects
- UCSF Precision Cancer Medical Building
- Kaiser Permanente Dublin Hub and Cancer Center Commercial
- 160 Folsom Street Mixed-Use Development

# RESUME

*Brandon Voges, Concrete Field Technician*

## EDUCATION:

**High School Diploma**  
Del Campo High School

## CERTIFICATIONS:

ACI Concrete Field-Testing Grade I

Caltrans Test Method 216

Caltrans Test Method 231

## AFFILIATIONS:

American Concrete Institute

## REPRESENTATIVE EXPERIENCE

Mr. Brandon Voges has four years of experience as a field technician and has his ACI concrete, nuclear gauge certification, as well as several CTM certifications. Additional duties include communicating with supervisor and staff with onsite inspections along with submitting daily reports with findings and details. Additionally, Mr. Voges is familiar with recognized test methods and procedures including ASTM, AASHTO, and Caltrans. He currently works in the field doing concrete, soil, and asphalt special inspections.

His extensive experience on federal and state funded jobs such as USACE levees and Caltrans roadway work has taught him the important role of testing agencies to ensure quality workmanship. He is a great communicator with all clients on site and off, and has impeccable report writing skills due to his public works background.

Additionally, Brandon used to work as a lab technician and is very familiar with lab tests that are performed, such as ASTM 698 and 1557, sand equivalents, R-values, cylinder breaks, soil gradations and minus 200 washes. This further helps him to communicate to clients about how his work on site impacts that job, and ensures he knows how to handle samples in accordance with the applicable specifications and procedures.

## PROJECT EXPERIENCE

- Oroville Dam Emergency Recovery Access Rd., Oroville, CA
- USACE Feather River West Levee, Yuba City, CA
- USACE Marysville Ring Levee Phase 2, Marysville, CA
- USACE Marysville Ring Levee Slurry Wall, Marysville, CA
- USACE Feather River FHR 1.0L Bank Protection, Yuba County
- USACE Feather West Levee Project, UPPR, Yuba County
- USACE PL 84-99 Feather River Repairs, Sacramento County
- USACE San Joaquin Levee Repairs, San Joaquin County
- Caltrans Highway 50 Coring
- Caltrans Lincoln Boulevard Phase 2, Lincoln, CA
- Caltrans - 5 CMU Soundwall 03-0H10U4, Sacramento, CA
- Sacramento County CMU Screen Wall Repair, Sacramento, CA
- Bridgeport Historic Covered Bridge, Nevada County, CA
- Historic Covered Bridge – Historical Rod Testing, Nevada County, CA
- FHWA Wolfsen Road, Merced County, CA
- USBR - Nimbus Hatchery's Fish Ladder, Folsom, CA
- Nimbus Fish Hatchery Raceway BFV Replacement, Folsom, CA
- EchoWater Tertiary Treatment Facilities, Elk Grove, CA
- EchoWater RAS Pumping Station Project, Elk Grove, CA
- EchoWater Channel Aeration Blower (CAB) Project, Elk Grove, CA
- Echowater Flow Equalization (FEQ), Elk Grove, CA
- Beale 60KV Switchyard, Beale AFB
- Fort Mason Building 201 Boiler Project- San Francisco, CA
- Mayer Memorial Hospital Expansion- Fall River Mills, CA
- NASA Ames Research Building N245, Moffet Field, CA
- Yosemite El Portal Sanitary Sewer Phase II, Yosemite, CA
- VA Mather New Dermatology Bldg., Rancho Cordova, CA

**EDUCATION:**

**BS in Civil Engineering-** Herat University- Afghanistan  
*Ranked 2<sup>nd</sup> most competitive university in Afghanistan, accredited by International Universities (Hartford University)*

**CERTIFICATIONS:**

ACI Concrete Field Test Technician Grade 1

ICC Special Inspector General Requirements

ICC Reinforced Concrete Codes

ICC Structural Masonry Codes

ICC Structural Masonry Plans

ICC Structural Masonry Special Inspector

ICC Spray Applied Fireproofing Inspector

US Army Corps of Engineers Quality Control Manager

APNGA Nuclear Gauge Safety & US DOT Hazmat Certified

Project Management, USAID, AWDP, Professional Course

**AFFILIATIONS:**

US Army Corps of Engineers

International Code Council

American Concrete Institute

**REPRESENTATIVE EXPERIENCE**

Mr. Aslamy is a civil engineer with professional experience in project control, quality control management, and design of multimillion infrastructure projects of roads, utilities, and related buildings constructed all over Afghanistan for 10 years. He has extensive experience supervising team members and ensuring compliance with industry standards and US Army Corp of Engineers (USACE) requirements. Additionally, his experience includes federal, military, and government Design-Builds, heavy civil construction, and ground-up building construction.

As Quality Control Manager, he has coordinated meetings and negotiations, recommended design and project changes, provided technical oversight for construction start up. Masoud has maintained the CQC Program elements, such as definable features of work, submittal register, QC requirements, equipment list, daily CQC report, punch list items, testing and user training requirements. Additional responsibilities include conducting and supervising on-site management staff, assisting in technical submittal review, and on-site inspections.

**PROJECT EXPERIENCE:**

- 19J Mixed Use Development, Sacramento, CA
- 1430 Q Street Mixed Use Development, Sacramento, CA
- Amazing Facts Church, Rocklin, CA
- Fort Sutter Hotel, Sacramento, CA
- Blue Wave Express Carwash, Elk Grove, CA
- Winter's Hotel, Winters, CA

**PREVIOUS COMPANIES:**

**Volt Work Force Solution, Elk Grove, CA**      **Feb 2018 to Jun 2018**  
*Mechanical Handler III*

Interpreted codes, visually inspected hardware, repaired the parts based on the codes and specifications. Tested the devices after repair, labeled and put back into production. Handled all devices safely and based on company policies, procedures and specs.

**World Vision International, Herat, AFGH**      **Sep 2015 to Nov 2017**  
*Design Engineer*

Estimated the cost of labor, materials, and other factors to ensure a quality estimate; coordinated with the project manager in implementation of project activities. Provided pre-design site inspection for construction of the health center. Handled punch lists, did AutoCAD drafting, reviewed as-built drawings, and managed the handing over of the project.

**ICMA International, Herat, AFGH**      **2013 to 2015**  
*Community Development Engineer*

Identified and constructed small infrastructure projects for urban and suburban areas; such as retaining wall, water reservoirs, small bridges and local schools. Prepared feasibility surveys, completed CAD drafting, and implemented project according to designs to ensure the project was consistent with the scope of work and project specifications. Reviewed plans and specs, corrected plans if needed, composed, submitted and tracked RFI's.

**UNICEF/ Rural Rehabilitation Development, AFGH      2011 to 2013**  
*WASH Officer*

Conducted site inspections to prevent /control issues, ensured work was performed per specs and QC Plan. Participated in weekly WASH cluster meetings, provided meeting agenda and minutes.

**United Universal Group, Shindand Airport      Feb 2011 to Aug 2011**  
*USACE Quality Control Manager/Engineer*

Prepared QC Plan, all submittal packages and reports on all tests and inspections for client approval. Assisted project manager for preparation of related RFI's. Ensured that all materials, workmanship, and construction are in full compliance with the contract plans and specification and all applicable codes. (ASTM, AASHTO, ACI, NEC, IPC, and IBC).

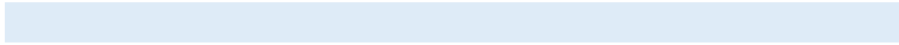
**ECCI/ 77 Turkish Construction Company      Nov 2010 to Jan 2011**  
*Site Engineer*

Ensured that all materials, workmanship, and construction are in full compliance with the contract plans and specification and all applicable codes. Prepared of all submittal packages and reports on all tests and inspections for client approval. Reviewed pre-design drawings and maps in Helmand Airport with ECCI civil organizations. Responsible for conducting follow-up meetings and preparing agendas and reports, including daily reports.

C

**Tab C**

Certifications/Licenses of Professional Staff



STATE OF CALIFORNIA  
LAND SURVEYORS, AND GEOLOGISTS  
**dpca** 2535 CAPITOL OAKS DRIVE, SUITE 300  
SACRAMENTO, CA 95833-2944  
(916) 999-3600 Toll Free: (866) 780-5370  
www.bpelsg.ca.gov



**PROFESSIONAL GEOLOGIST**  
CERTIFICATE NO. **GEO 3557**  
EXPIRATION **09/30/2**

**CURTIS EDWARD HENDRICK**  
7325 HIDDEN VALLEY PLACE  
ROSEVILLE CA 95678

Signature *Curtis E. Hendrick* RECEIPT NO. **00748412**

BOARD FOR PROFESSIONAL ENGINEERS,  
LAND SURVEYORS, AND GEOLOGISTS  
**dpca** 2535 CAPITOL OAKS DRIVE, SUITE 300  
SACRAMENTO, CA 95833-2944  
(916) 999-3600 Toll Free: (866) 780-5370  
www.bpelsg.ca.gov



**CERTIFIED ENGINEERING GEOLOGIST**  
CERTIFICATE NO. **EG 1052**  
EXPIRATION **09/30/23**

**CURTIS EDWARD HENDRICK**  
7325 HIDDEN VALLEY PLACE  
ROSEVILLE CA 95678

Signature *Curtis E. Hendrick* RECEIPT NO. **00748409**



BOARD FOR PROFESSIONAL ENGINEERS,  
LAND SURVEYORS, AND GEOLOGISTS  
2535 CAPITOL OAKS DRIVE, SUITE 300  
SACRAMENTO, CA 95833-2944  
(916) 999-3600 Toll Free: (866) 780-5370  
www.bpelsg.ca.gov



**GEOTECHNICAL ENGINEER**

CERTIFICATE NO.  
GE 2021

EXPIRATION  
03/31/23

CURTIS EDWARD HENDRICK  
7325 HIDDEN VALLEY PL  
GRANITE BAY CA 95746

Signature Curtis E. Hendrick

C 00029260  
QUALIFIER NO.

RECEIPT NO.  
10820132

BOARD FOR PROFESSIONAL ENGINEERS,  
LAND SURVEYORS, AND GEOLOGISTS  
2535 CAPITOL OAKS DRIVE, SUITE 300  
SACRAMENTO, CA 95833-2944  
(916) 999-3600 Toll Free: (866) 780-5370  
www.bpelsg.ca.gov



**CIVIL ENGINEER**

CERTIFICATE NO.  
C 29260

EXPIRATION  
03/31/23

CURTIS EDWARD HENDRICK  
7325 HIDDEN VALLEY PL  
GRANITE BAY CA 95746

Signature Curtis E. Hendrick

RECEIPT NO.  
10820134



## EduCode 2021



March 1-5, 2021

EduCode 2021 will feature highly specialized courses on building safety

William Reynolds	Marysville	CA	Structural Masonry Special Inspector (expires 02/04/2024)
			Reinforced Concrete Special Inspector Legacy (expires 02/04/2024)
			Structural Welding Special Inspector (expires 02/04/2024)
			Structural Steel and Bolting Special Inspector (expires 02/04/2024)
			Structural Steel & Welding Spec Insp - Legacy (expires 02/04/2024)



American Concrete Institute  
*Always advancing*

Search the ACI Site...

Search

### Why ACI Certification

[Verify a Certification](#)

[Certification Programs](#)

[Testing Locations](#)

[Certification FAQs](#)

[Sponsoring Group Resources](#)

[Americans with Disabilities Act \(ADA\) Info](#)

## Verify A Certification

### SEARCH RESULTS

Name: Reynolds

Your search returned 6 records.

#### Reynolds, Kathryn J

ACI CONCRETE FIELD TESTING TECHNICIAN - GRADE I  
Expires: June 11, 2021  
Anaheim, CA 92806-0183

#### Reynolds Jr, John D

ACI CONCRETE FIELD TESTING TECHNICIAN - GRADE I  
Expires: December 14, 2018  
Carmichael, CA 95608-6059

#### Reynolds, William F

ACI CONCRETE FIELD TESTING TECHNICIAN - GRADE I  
Expires: February 27, 2021  
Marysville, CA 95901-3533



Need Help?  
[Email Support](#)

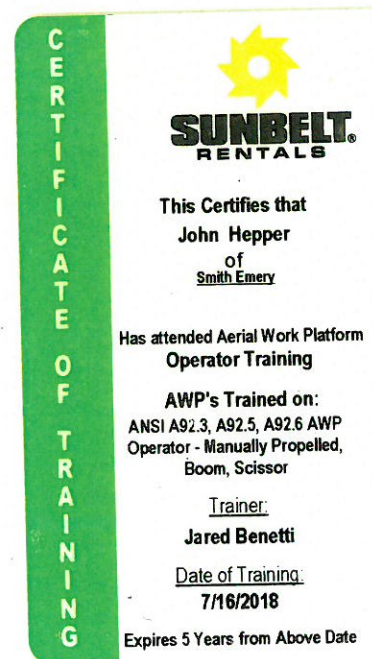
[VIEW ALL RESOURCES IN THE ACI STORE](#)

### NEWS

July 18, 2018  
[American Concrete Institute Launches New Decorative Concrete Flatwork Certification Program](#)

July 13, 2018  
[ACI Increases Investment in Middle East with New Student Fellowship](#)

July 10, 2018  
[Record-Breaking 80,000th Active Concrete Field Testing Technician Certified](#)





## Why ACI Certification

### Verify a Certification

#### Certification Programs

#### Testing Locations

#### Certification FAQs

#### Sponsoring Group Resources

#### Americans with Disabilities Act (ADA)

## Verify A Certification

### SEARCH RESULTS

Name: lee

Your search returned 32 records.

Lee, Nicholas J

ACI CONCRETE FIELD TESTING TECHNICIAN - GRADE I

Expires: February 06, 2021

Rio Linda, CA 95673-4018 United States

Lee, Nicholas J

ACI CONCRETE STRENGTH TESTING TECHNICIAN

Expires: November 19, 2021

Rio Linda, CA 95673-4018 United States



Need Help?  
Email Support

### CERTIFICATION VERIFY APP

Download the ACI Certification Verify app to quickly and easily verify the status of ACI-certified individuals.



### Search for Certified Professionals

#### Preferred Provider Program

#### Safety 2.0

#### Products and Services

reamond

Please select

Certification Type:

Please select

Search

Reset

PLEASE NOTE: Search will return a maximum of 500 records, and is limited to that information on record as provided by candidates.

## Search Result:

1 records found.

Certified under this name	City	State	Certificates
Nicholas Lee	Redmond	WA	Structural Masonry Special Inspector (expires 07/06/2024) Soils Special Inspector (expires 07/06/2024) Spray Applied Fire Proofing Special Inspector (expires 07/06/2024) Reinforced Concrete Special Inspector Associate (expires 07/06/2024)

DCW January 21-23 Las Vegas

\$75 expo pass expires Nov. 15  
2,000+ Exhibits!

Edu 2020 CODE International  
March 9-13, 2020  
The Orleans Hotel, Las Vegas, NV

REGISTER TODAY!





Why ACI Certification

[Verify a Certification](#)

Certification Programs

Testing Locations

Certification FAQs

Sponsoring Group  
Resources

Americans with  
Disabilities Act (ADA)  
Info

## Verify A Certification

### SEARCH RESULTS

Name: Voges

Your search returned 1 record.

Voges, Brandon

[ACI CONCRETE FIELD TESTING TECHNICIAN - GRADE I](#)

Expires: August 18, 2023

CITRUS HEIGHTS, CA 95621 United States

Results Per Page 10



Need Help?  
[Email Support](#)

### CERTIFICATION VERIFY APP

Download the ACI Certification Verify app to quickly and easily verify the status of ACI-certified individuals.





# AMERICAN CONCRETE INSTITUTE

*This is to certify that*

**MASOUD ASLAMY**

*has demonstrated knowledge and ability by  
successfully completing the ACI Certification  
requirements and is hereby recognized as an*

**ACI Concrete Field Testing Technician - Grade I**

**Certified Date: 04/14/2018 Expires: 04/14/2023**

**Examiner of Record: Chris J Fuchs**

*John W. M. M. M.*  
**ACI Managing Director of Certification**

*The Authenticity of this certification can be verified at [www.ACICertification.org/verify](http://www.ACICertification.org/verify)*

## Verified Candidate



**INTERNATIONAL  
CODE  
COUNCIL®**





[verify.iccsafe.org/9168104](http://verify.iccsafe.org/9168104)

**Search Again**

**Customer Name:**

**Account Number:**

Masoud Aslamy

9168104

## Certifications:

Initial Certification	Current Expiration	Certificate Name
05/16/2019	05/16/2022	Spray Applied Fire Proofing Special Inspector
04/30/2019	04/30/2022	Special Inspector General Requirements
01/24/2020	01/24/2023	Reinforced Concrete Codes
02/08/2020	02/08/2023	Reinforced Concrete Plans
02/22/2020	02/22/2023	Structural Masonry Codes
02/29/2020	03/01/2023	Structural Masonry Plans
03/02/2020	03/02/2023	Structural Masonry Special Inspector
07/01/2020	07/01/2023	Prestressed Concrete Codes
07/26/2020	07/26/2023	Structural Steel and Bolting Codes
08/10/2020	08/10/2023	Structural Steel and Bolting Plans
08/12/2020	08/12/2023	Structural Steel and Bolting Special Inspector



**Tab D**  
Laboratory Certifications

D



**USACE CERTIFICATE  
OF  
LABORATORY VALIDATION**

**Allerion Consulting Group, Inc. dba ACE Quality Control**  
**1050 Melody Ln. Ste 160**  
**Roseville, CA,**  
**JJ Tadlock**  
**(916) 742-5096**

has demonstrated, by abbreviated audit of its AASHTO accreditation, or by inspection of required records, equipment, procedures, facilities, and/or final reports, its proficiency to perform testing of construction materials, as established by the quality standards of AASHTO R 18 guidance and the requirements of the applicable ASTM standards.

**THIS USACE CERTIFICATE OF LABORATORY VALIDATION IS ACCURATE AS OF ITS DATE AND TIME OF  
GENERATION:**

**29 JUN 2021 AT 10:55 HOURS**

**ALL METHODS LISTED ON THIS CERTIFICATE OF VALIDATION WILL EXPIRE ON 06/23/2023**

PLEASE CONFIRM THE CURRENT VALIDATION STATUS OF THIS LABORATORY USING THE SEARCH FEATURE ON  
OUR PUBLIC WEBSITE: <https://mtc.erdc.dren.mil>

A handwritten signature in black ink, appearing to read "Chad A. Gartrell", is written over a horizontal line.

Chad A. Gartrell, PE, Director  
USACE Materials Testing Center  
Vicksburg, Mississippi, USA

**AGGREGATE**

Aggregate - C 29 - Opt - Unit Weight and Voids in Aggregate  
Aggregate - C 40 - Opt - Organic Impurities  
Aggregate - D 75 - Opt - Sampling  
Aggregate - C 88 - Opt - Sulfate Soundness  
Aggregate - C 117 - Req - Material Finer than 75  $\mu$ m (No. 200) Sieve  
Aggregate - C 127 - Req - Specific Gravity & Absorption in Coarse Aggregate  
Aggregate - C 128 - Req - Specific Gravity & Absorption in Fine Aggregate  
Aggregate - C 136 - Req - Sieve Analysis of Aggregates  
Aggregate - C 566 - Opt - Total Moisture Content  
Aggregate - C 702 - Opt - Reducing Samples to Testing Size  
Aggregate - C 1077 - Opt - Concrete and Concrete Aggregate Testing Standards (Quality Standards)  
Aggregate - D 2419 - Opt - Sand Equivalent Value  
Aggregate - D 3666 - Opt - Minimum Requirements for Agencies Testing and Inspecting Road and Paving Materials  
Aggregate - D 3744 - Opt - Aggregate Durability Index  
Aggregate - D 4791 - Opt - Flat and Elongated Particles in Course Aggregate  
Aggregate - D 5821 - Opt - Percentage of Fractured Particles in Coarse Aggregate

**BITUMINOUS**

Bituminous - D 2726 - Req - Bulk Specific Gravity and Density  
Bituminous - D 2950 - Req - Density of Bituminous Concrete in Place by Nuclear Methods

Bituminous - D 3202 - Opt - Prep of Bituminous Mixture Beam Specimens by California Kneading Compactor (Withdrawn 2007)  
Bituminous - D 3666 - Opt - Minimum Requirements for Agencies Testing and Inspecting Road and Paving Materials

## CONCRETE

Concrete - C 31 - Req - Making and Curing Test Specimens in the Field  
Concrete - C 39 - Req - Compressive Strength of Cylindrical Specimens  
Concrete - C 138 - Req - Unit Weight and Air Content by Gravimetric  
Concrete - C 143 - Req - Slump  
Concrete - C 172 - Req - Sampling  
Concrete - C 173 - Req - Air Content by Volumetric \*\*\*required if C231 not performed\*\*\*  
Concrete - C 231 - Req - Air Content by Pressure \*\*\*required if C173 not performed\*\*\*  
Concrete - C 511 - Opt - Moist Cabinets, Moist Rooms, Water Storage Tanks  
Concrete - C 617 - Opt - Capping Cylindrical Specimens  
Concrete - C 1064 - Req - Temperature of Concrete  
Concrete - C 1077 - Opt - Concrete and Concrete Aggregate Testing Standards (Quality Standards)  
Concrete - C 1231 - Opt - Unbonded Caps

## SOILS

Soils - D 421 - Req - Dry Preparation for Particle Size Distribution & Soil Constants  
Soils - D 698 - Req - Compaction Characteristics by Standard Effort  
Soils - D 1140 - Req - Material Finer than 75  $\mu$ m (No. 200) Sieve  
Soils - D 1556 - Req - Density & Unit Weight by Sand Cone  
Soils - D 1557 - Req - Compaction Characteristics by Modified Effort  
Soils - D 2166 - Req - Unconfined Compressive Strength  
Soils - D 2216 - Req - Water Content  
Soils - D 2487 - Req - Classification of Soils  
Soils - D 2488 - Req - Description & Identification of Soils (Visual-Manual Procedure)  
Soils - D 3740 - Opt - Soil and Rock Testing Standards (Quality Standard)  
Soils - D 4318 - Req - Liquid & Plastic Limits & Plasticity Index  
Soils - D 4643 - Req - Determination of Water Content of Soil by Microwave Oven  
Soils - D 4829 - Opt - Expansion Index of Soils  
Soils - D 6913 - Req - Particle-Size Distribution of Soils Using Sieve Analysis  
Soils - D 6938 - Req - Density and Water Content by Shallow Depth Nuclear Method

## SPRAYED FIRE RESISTIVE

Sprayed Fire Resistive - E 329 - Opt - Standard Specification for Agencies Engaged in Construction Inspection, Testing, or Special Inspection  
Sprayed Fire Resistive - E 605 - Opt - Thickness and Density of Sprayed Fire Resistive Material (SFRM) Applied to Structural Members  
Sprayed Fire Resistive - E 736 - Opt - Cohesion Adhesion of Sprayed Fire Resistive Materials Applied to Structural Members

# CALIFORNIA DEPARTMENT OF TRANSPORTATION

Presents this CERTIFICATE to

## Nicholas Lee

who is certified to perform the following tests:

Test Method	Expiration Date	IA Responsible	Associated Laboratory
CT 105	2021-09-28	Biplab Bhattacharya	Lab 1
CT 125 AGG	2021-09-28	Biplab Bhattacharya	(No lab)
CT 125 HMA	2021-10-05	Biplab Bhattacharya	(No lab)
CT 201	2021-09-28	Biplab Bhattacharya	Lab 1
CT 202	2021-09-28	Biplab Bhattacharya	Lab 1
CT 205	2021-09-28	Biplab Bhattacharya	Lab 1
CT 216	2021-09-28	Biplab Bhattacharya	Lab 1
CT 217	2021-09-28	Biplab Bhattacharya	Lab 1
CT 226	2021-09-28	Biplab Bhattacharya	Lab 1
CT 227	2021-09-28	Biplab Bhattacharya	Lab 1
CT 229	2021-09-28	Biplab Bhattacharya	Lab 1
CT 231	2021-11-17	Jackie Treat	Lab 1
CT 504	2021-02-06	Richard Hibbard	Lab 1
CT 518	2021-02-06	Richard Hibbard	Lab 1
CT 539	2021-02-06	Richard Hibbard	Lab 1
CT 540	2021-02-06	Richard Hibbard	Lab 1
CT 543	2021-02-06	Richard Hibbard	(No lab)
CT 556	2021-02-06	Richard Hibbard	Lab 1
CT 557	2021-02-06	Richard Hibbard	Lab 1

Lab 1: ACE Quality Control, 1050 Melody Lane, Suite 160, Roseville

No Lab: Laboratory associated with the tester is not accredited to perform the test method identified. Testers must be associated with an accredited laboratory.



Certified Independent Assurance (IA)

Date issued: 11/18/2020

Tester ID: 03706

Note: This certificate is valid as long as the Tester complies with applicable requirements in Caltrans Independent Assurance Program Manual.

Please verify tester certifications by visiting the SIAD website at <https://sia.dot.ca.gov/>

Page 1/1

# STATE OF CALIFORNIA DEPARTMENT OF TRANSPORTATION

## CALTRANS ACCREDITATION LABORATORY INSPECTION REPORT

**Expiration Date:** 2021-09-23

**Inspected By:** Jackie Treat

**IA No.:** 107

**Phone:** 916-926-7453

**RSP #:** 108

**File:** Material Category 500

**Laboratory:** ACE Quality Control

**Address:** 1050 Melody Lane, Suite 160 Roseville  
CA, 95678

**Lab QC Mgr.:** Nicholas Lee

**E-mail:** nick.lee@aceqc.com

**Telephone:** 916-208-5457

**Fax #.:**

A certified Independent Assurance (IA) visited this laboratory on 2020-11-17

Only the equipment to be used on Caltrans Construction projects and/or local construction projects on the National Highway System was checked for qualification. At the time of Caltrans Accreditation, this laboratory had all necessary equipment to perform the test methods indicated below.

Testing personnel shall be Caltrans Qualified and possess a current Caltrans Certification Form TL-0111 or AASHTO Proficiency Form TL-0115 prior to performing any sampling or testing.

AASHTO T11	AASHTO T27	AASHTO R47	AASHTO R76	AASHTO T176
AASHTO T248	AASHTO T255	AASHTO T329	AASHTO T335	CT 105
CT 106	CT 125 AGG	CT 125 HMA	CT 201	CT 202
CT 205	CT 216	CT 217	CT 226	CT 227
CT 229	CT 231	CT 504	CT 518	CT 539
CT 540	CT 541	CT 556	CT 557	

A visual check was performed and documents provided as necessary for the following items:

<input checked="" type="checkbox"/> Facility Safety Manual	<input checked="" type="checkbox"/> Copies of current applicable test procedures
<input checked="" type="checkbox"/> Laboratory Procedures Manual	<input checked="" type="checkbox"/> Calibration and service documentation
<input checked="" type="checkbox"/> Laboratory Quality Control Manual	<input checked="" type="checkbox"/> Calibration stickers affixed to test equipment
<input checked="" type="checkbox"/> Proper test equipment	(dated within the 12 months)

On 2020-11-17, this laboratory was Caltrans Qualified by:

Jackie Treat # 107  
(Printed name of IA person)

Jackie Treat #107  
(Signature of IA person)